



# AI-Assisted Programming

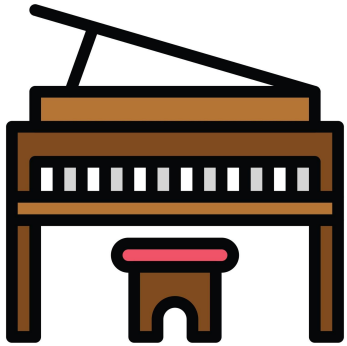
Expanding Planners' Digital Toolbox

---

**Jing Zhang, FAICP**

Founder, The Planning Community

25



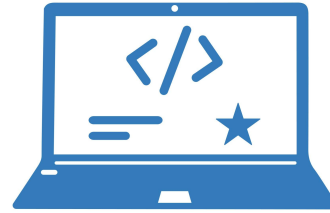
Church pianist-organist

15



Work + Volunteer

7



PHP, Javascript,  
No-code front end,

1



YouTube/book-  
based  
half-baked  
private coach  
providing food,  
water and  
transportation



# Define Programming

**Turn ideas into reality: web-based applications**



*Through coding in computer languages: **If A, then B.***



# AI-Assisted Programming

How Planners Can Develop

2

**Web Applications**

1

Using AI

3

**Safety**

4





# Website + Web Applications

Static /  
Frontend

Dynamic /  
Database /  
Backend





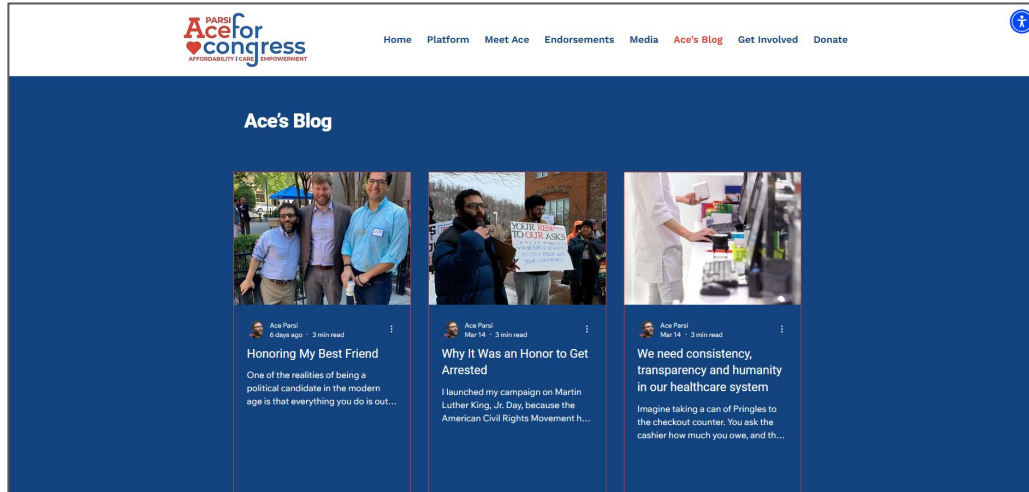
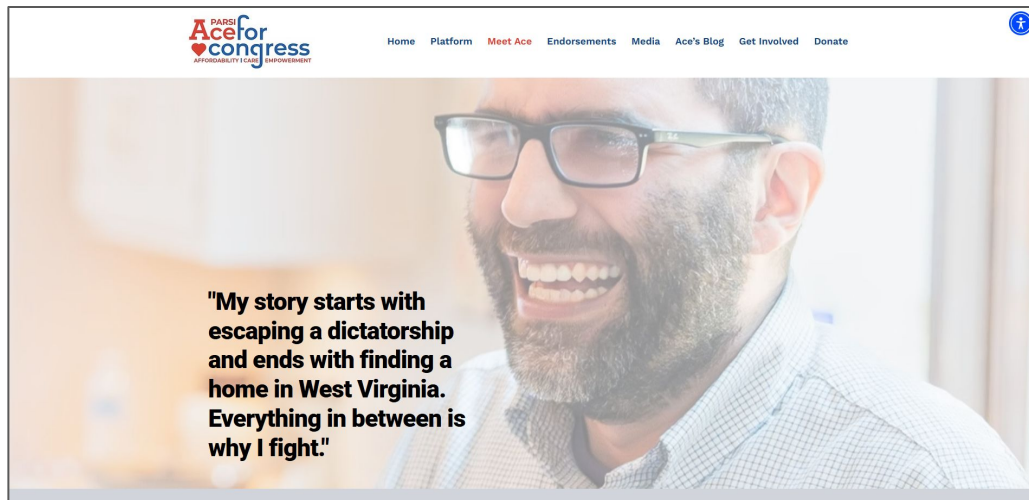
# Websites

Ace Parc for Congress

www.AceForCongress.com

Wix (Studio + Blog app)

Challenge: communication



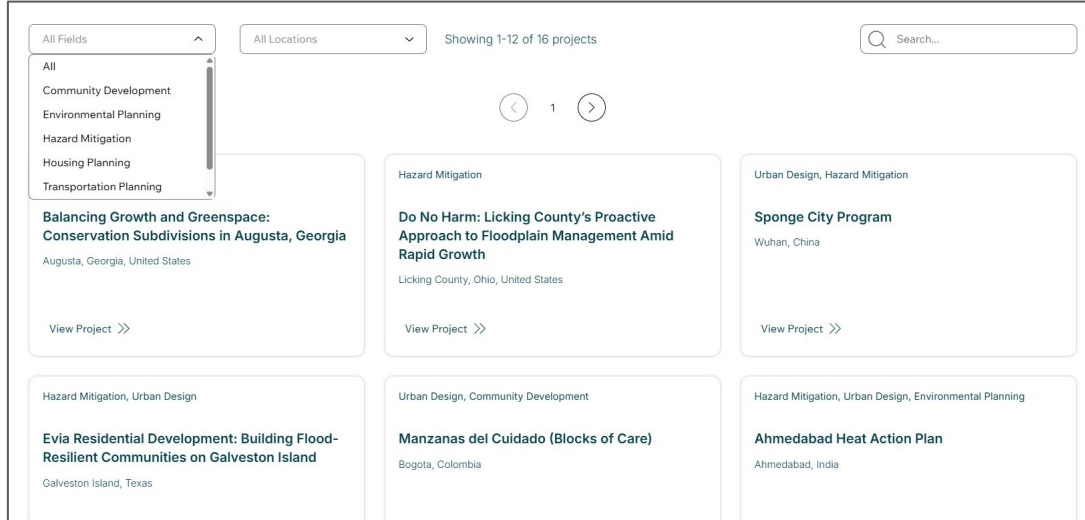
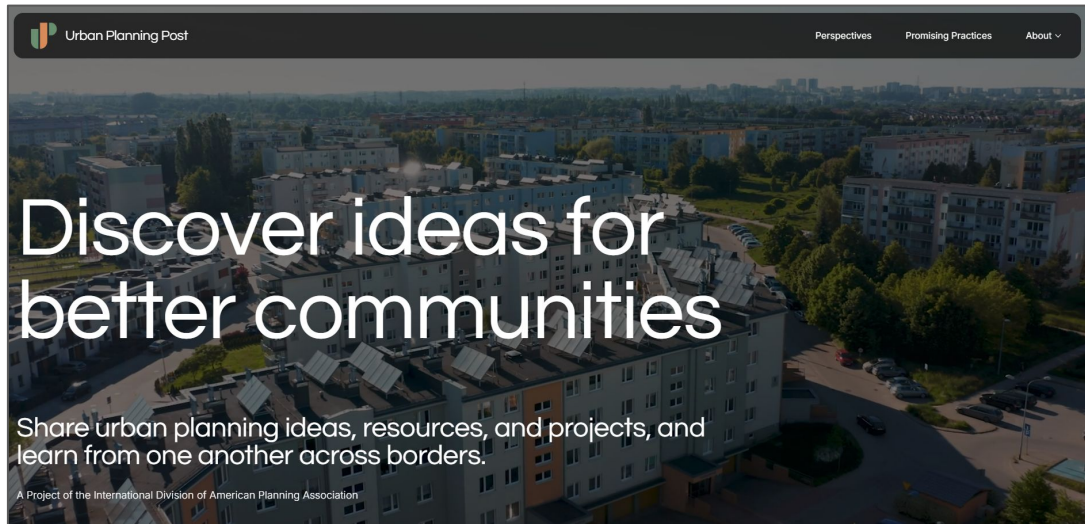


# Websites

APA International Division

[www.UrbanPlanningPost.com](http://www.UrbanPlanningPost.com)

Wix (Studio + Collection)  
+ light Javascript





# Web Applications

Participatory Budgeting

www.Planning.community

Wix (Studio + Collection) +  
Chart.js +  
Javascript +  
HTML iframe



Budget Left **\$877,000** Allocate Full Budget to Submit

**City-Wide LED Streetlight Conversion**  
Budget Goal: \$500,000

Replace all existing high-pressure sodium streetlights with energy-efficient LED bulbs to reduce the city's energy consumption, lower costs, and decrease light pollution.

[More Info](#)

Your Allocation: 18.2% of the project funded

**\$91,000**  
9.1% of Your Total Budget

Reset to \$0 Max

**Mobile Farmers' Market**  
Budget Goal: \$65,000

Launch a 'market on wheels' to bring fresh, locally-grown produce to underserved neighborhoods and food deserts within the city.

[More Info](#)

Your Allocation: 49.2% of the project funded

**\$32,000**  
3.2% of Your Total Budget

Reset to \$0 Max

**Downtown Main Street**  
0.0% of the project funded

PLANNING COMMUNITY Tools Resources About Projects

## Results

7 people participated.

Total Funding Distribution

Project	Color
West End Bike Lane Network	Blue
Senior Center Expansion	Red
Northside Community Art Murals	Orange
Riverfront Trail Extension	Green
City-Wide LED Streetlight Conversion	Purple
Cross-Town Express Bus Route	Cyan
Public Library Tech Hub	Pink
Downtown Main Street Revitalization	Light Green
Mobile Farmers' Market	Dark Blue
Community Composting Program	Dark Red
Historic District Revitalization Fund	Yellow
City Park Playground Expansion	Dark Green

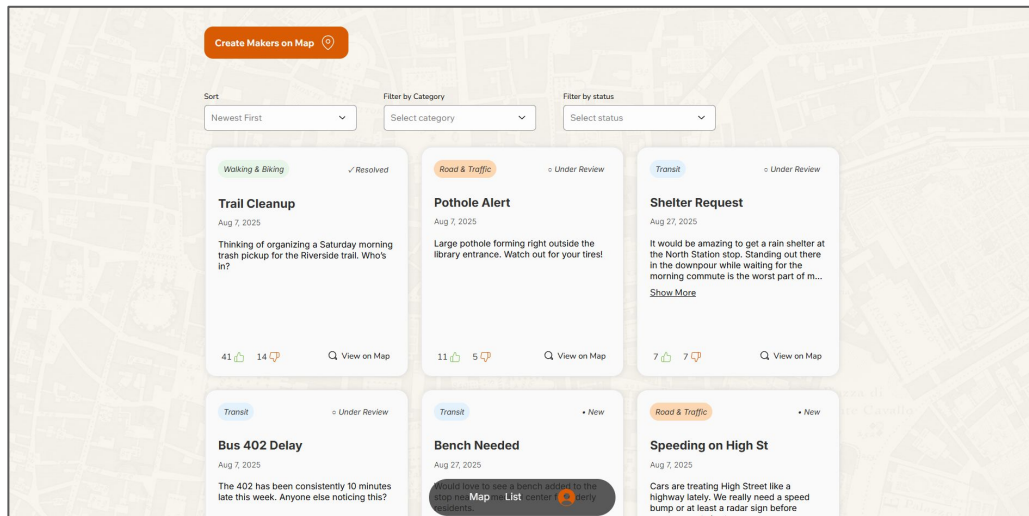
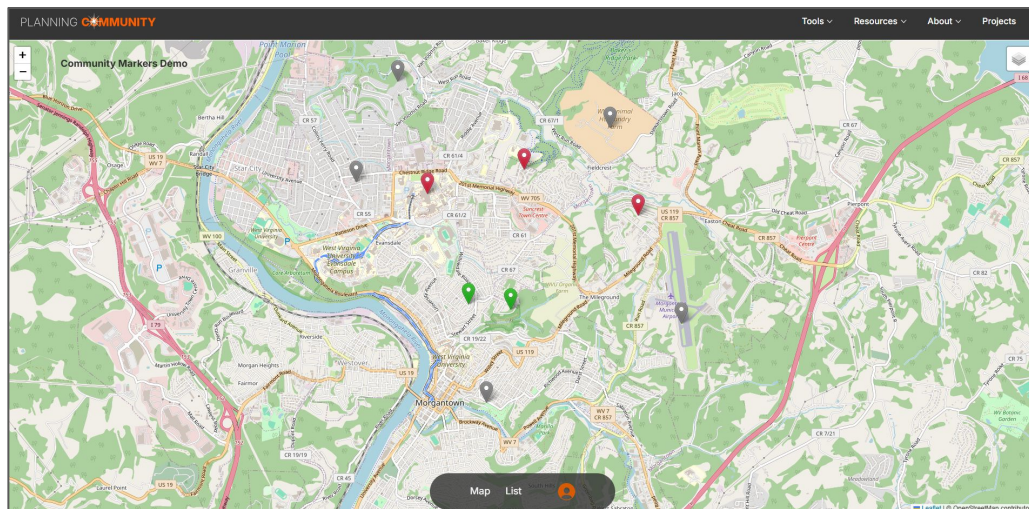


# Web Applications

Community Marker

www.Planning.community

Wix (Studio + Collection) +  
Leaflet +  
Javascript +  
HTML iframe





# Web Applications

Project Dashboard

www.Planning.community

Wix (Studio + Collection) +  
Leaflet + Carto +  
Javascript +  
GeoJson



Project Name	Priority	Est. Cost
Lakeside Avenue Pedestrian Crossing	Tier 4	\$210,000
Willow Lane Roundabout Installation	Tier 4	\$1,800,000
Cedar Grove Bus Stop Upgrades	Tier 1	\$330,000
Harborview Ferry Access Improvements	Tier 2	\$720,000
Willow Creek Roundabout Construction	Tier 2	\$2,200,000
Meadowbrook Trail Bike Path Extension	Tier 4	\$540,000
Harbor Road Bus Lane Implementation	Tier 2	\$1,100,000
Oak Hill Intersection Lighting Upgrade	Tier 3	\$260,000
Lincoln Street Signal Synchronization	Tier 1	\$540,000
Donna Ave Intersection Upgrade	Tier 3	\$1,250,000
Summit Avenue Roadway Resurfacing	Tier 4	\$1,120,000

Willow Lane Roundabout Installation

Project ID: TR-117

PRIORITY: Tier 4 STATUS: Programmed

MODES: Freight, Bus, Private Vehicle EST. COST: \$1,800,000

LOCATION:  
Willow Lane & Elm St intersection, South Suburb

SCOPE OF WORK:  
Construct single-lane roundabout, improve signage, add crosswalks

STAFF NOTES:  
May require temporary traffic detours; utility check needed



# How Planners Can Do It?

Before discussing how...why

- The Interest + The Need



# How Planners Can Do It?

Before discussing how...why

- Stay until 4:00 AM + work remotely + improvement engagement + increase planners capacity



# BIG PICTURE

FOR PLANNERS

**Design + Data Structure + Logics + Deploy**



# How Planners Can Do It?

1. Front End + Back End
  2. Basic Knowledge on the Structure
- If 1 and 2 are true, then AI Assisted coding / vibe coding



**Front End**



**Back End**





Front End

Basic  
Knowledge of  
Front End  
Design

+

No-Code  
Platform



# Basic Skills of Front End Design

**Architecture:** Sections, Containers

**The Individual Box:** Margin, Padding, Border.

**Layout Engines:** Flexbox, CSS Grid, Positioning.

**Responsiveness:** Mobile-First, Relative Units.

**Visuals:** Typography, Color

**Principles**



**Principle #1: Content Before Design**

**Principle #2: Structured Rows for Distinct Ideas**

**Principle #3: Responsive Design**

**Principle #4: Mobile-First Approach**

**Principle #5: Convention Over Creativity**

[www.UrbanPlanning.tech](http://www.UrbanPlanning.tech)



2026

## ESSENTIAL WEB SKILLS FOR URBAN PLANNERS

JING ZHANG, FAICP  
SARAH VITALE, AICP





## No Code Platform



**WebFlow: Design tools**

**Bubble: Design application tools**

**Wix: Anything is possible platform**

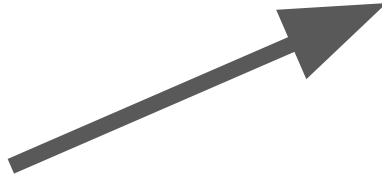
**Squarespace: the polished**

**Google Sites: basic, free, but useful**



## No Code Platform

For planners



**WebFlow: Design tools**

**Bubble: Design application tools**

**Wix: Anything is possible platform**

**Squarespace: the polished**

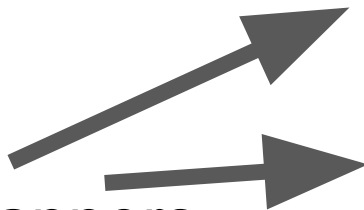
**Google Sites: basic, free, but useful**





## No Code Platform

For planners



**WebFlow: Design tools**

**Bubble: Design application tools**

**Wix: Anything is possible platform**

**Squarespace: the polished**

**Google Sites: basic, free, but useful, Domain  
Connetion**

[www.APIplanning.org](http://www.APIplanning.org)

[www.AffordableHousingRoundtable.org](http://www.AffordableHousingRoundtable.org)



Home

Authors

How to Learn

✓ Part 1: Core Website Skills for Planners

Part 2: Web

✓ Development Topics for Planners

✓ Part 3: Case Studies

Appendix A - Website Effectiveness Checklist

Appendix B - Check Mobility Compatibility on Desktop

Appendix C - Things to Avoid in Web Design

Appendix D - Sample requests/communicati... with Web Developers

# Essential Web Skills for Urban Planners

## Introduction

[What It Is and Who It Is For](#)

[What It Is Not](#)

[Why It Matters](#)

### What It Is and Who It Is For

This guide introduces the fundamentals of web development and outlines how to build the most relevant skills for the profession. It offers a framework and practical

www.urbanplanning.tech



Basic Experience of the Structure

System Architect / Orchestra Conductor

Put Things Together





# Using AI

- Articulate your specific request.
- Know what you need to provide.
- Understand the code (even conceptually).
- Keep Organized.



I am developing a Transportation Project Tracker map. I have a leaflet map embedded in a box/frame on a page in Wix Studio. How to import both point and line GIS data (Geojson) from wix collection. When user click it, it will show a pop up with project name and a link to a dynamic page showing the project information. I understand it is complicated. Give me your thoughts first, no need to dive into code for now.



Now, I am ready to work on the map. I have already have the dynamic table with filter on the page. The left map container stays, while the the right table section scroll down when there are more project to show. Help me with the embeded code, it needs to 1) load Leaflet map with layers for lines and points. 2) when I click the feature on the map, the corisponing row of the table will be lightlited. (let me know if that is possible in Wix Studtio) 3) the mode and priority filter can fiter the project on the map. Eventually, I will have about 50 projects in real production.



This is my collection fields set up about the GIS information, I have geoJSON for lines, and latitude and longitude for markers, can I combine them into one geoJSON field and take advantage of the "type": "Point" to tell the code the type of features. Or I can use a separate field with either Line or Point value to tell the difference.



I am using wix studio. How to solve this design issue. It is a dynamic card layout. I want to the lower part keep at the button, regardless the length of the main content.

Priority: High

### Need for More Diverse Local Shops Downtown

ECONOMY & LOCAL BUSINESS

Our downtown area is lovely, but I feel it could benefit from a greater variety of local businesses. It seems we have a lot of cafes and antique stores, which is great, but we're l...

👍 7 🗨️ 2

9/2/25

Priority: Normal

### Rezoning Request for High-Density Housing on Westlake Drive

LAND USE & DEVELOPMENT

I recently saw a notice about a proposal to rezone the old industrial plot on Westlake Drive for a new high-density apartment complex. While I understand the need for more housing,...

👍 5 🗨️ 25

8/6/25



I have a Community Log app. I want to add "sort by" functions. I am using Wix Studio. On the page, I have a repeater (#repeater1) with cards, with dataset name "CommentsCollection dataset". I have a drop down "#dropdownSortBy". It has options as following: Newest First (value: new), Oldest First (value: old), Most Popular (value: most\_popular), and Least Popular (least\_popular). I want it sort the Collection - CommentsCollection. The id of relevant fields are: date\_test, likes, and dislikes. help me write the function code



I got an error: createConsoleProxy.ts:67 Submission Failed L: WDE0025: The LivePoll collection does not exist. but I do have the LivePoll collection.

You are right. It is the collection id mistake. It is solved now. Now, next step, after successful submission the choice. I hope to refresh button to reset. help me with the code



Public/Frontend Code  
Database Permissions  
postMessage  
Form validation & Sanitization



# Sources

[www.traversymedia.com](http://www.traversymedia.com)

[www.urbanplanning.tech](http://www.urbanplanning.tech)

[www.planning.community/accessibilityguide](http://www.planning.community/accessibilityguide)

[jing@planning.community](mailto:jing@planning.community)



**How far planners should  
go into web tech?**



# The Importance of Fundamentals